


Puzzler

ARROWWORDS

Please enjoy these sample pages from
Puzzler Arrowwords.

A subscription to Puzzler Arrowwords
is the best way to ensure you never miss
this brilliant magazine, delivered
direct to your door!

SUBSCRIBE NOW

TV dinner (5,4)	▼	West African republic	▼	It's possible, very likely (1,4,3)	▼	— Pinafore, opera (inits)	▼	— Jackson, US singer (2,4)					
▶													
Black and white striped animal		Lowest part of a ship		Really love		Dull people		Played a role					
▶		▼		▼		▼		▼					
Mel —, pictured presenter	▶					— constrictor, snake	▶			Greater amount	▼	— out, relax and do nothing	<i>Much — About Nothing, play</i>
▶													
As well	▶				Common rodent	▶				In biology, eggs	▶		
▶													
▶								Went wrong	▶				
Portuguese holiday region		Seeing organ	▶			— Vicious, 1970s punk rock star	▶			Sense of self	▶		

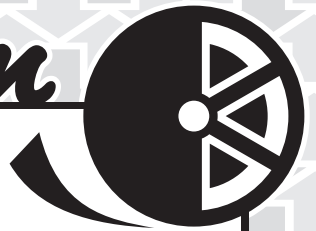
Two of a Kind

← Funny friends →

Enthusiastic, keen	▼	— Christian Andersen, author	Large non-flying bird	▼	French cheese	Person captured in battle (inits)	▼	Every twelve months (3,5)	▼	— out, make last	▼	Tiny crawling insects	
▶			▼		Sue —, pictured presenter	▶							
Edition (of a publication)		Person under age	▶							Naming words		Not married	Before time
▶													
					Sickly, pale	▶				Function, purpose	▶		
					— Reeves, <i>The Matrix</i> star	Notable period	Twelve o'clock	▶				— carte, as on the menu (1,2)	
										Armed conflict	▶		
					Heats up		Ailing, sick	▶					
										— Tripper, Beatles hit	▶		



Name That *film*



Solve the puzzle as normal, then rearrange the shaded laters to spell a romantic drama of 2011 that starred our pictured actress. (3,3)

Fine wool shawl Moist	Chimpanzee, eg	Pictured actress' surname	Written wrongly	Great wonder	Floating ice mass	Suggestive look	Conical tent
		Good-natured					Mr Stallone's nickname
Which person?	Take in food	Foundation	Lawn-watering device (4,4)	Cleans with a broom			
— <i>Las Vegas</i> , Elvis song	Sheep's bleat			Matador's shout	— squirrel, common tree-dweller		
		Misery					
<i>Swan</i> —, ballet	<i>We</i> — <i>Overcome</i> , song						
		Till now					



ANSWER

Pictured actress' first name	Breakfast, lunch or dinner	Orderly, neat	Time past				
Requiring							
Brings (troops) into action	Golfer's target score	— Welles, US film actor	Use your voice				
				Eric —, English comedian	Lean to one side	Popular sandwich filling (inits)	Aladdin's magic helper
Middles (of apples)	Yoko —, Mrs Lennon	Bible's first woman	Tiny tablet			Not very well	Navigation aid (inits)
			Amending proofs				
Adult females	Singing parts					Mouth edge	
			Tea-making appliances				

TRIVIA QUIZ – Entertainment

Animal related to the llama		Begging request		Bark of a small dog		Be unsuccessful		Indian yogurt drink		Receding tide		Extravagant publicity
						Monastery buildings						
Peter _____, comedian		<i>All ____ Need Is Love</i> , Beatles song		Large		Recipient of a letter		Discharge (fumes)		Indonesian holiday isle		Comes to a close
			Nonchalantly unconcerned						Stinging insect			
Gave unwillingly	<i>A ____ with a View</i> , EM Forster novel		Passes away		Poorly lit				Computer statistics		French word for 'she'	
							Lounged, lazed					
Envisage, predict		Large stone		Rod _____, Maggie May singer	Sells in a shop							
							Surface qualities (of fabric, eg)	Psychic power (inits)		Cow's sound		Deep furrow
Highest quantity					Paddle _____, river boat							
Lopsided	Daze, trance		Calms						One of the seven deadly sins		Smoothed clothes	
					Take advantage of							
Animal hair		Apply friction	Aid in a crime					Bo _____, girl who lost her sheep		Long journey on foot		Price labels
			Pull (a vehicle)		<i>Vanilla _____</i> , Tom Cruise film	Final outcome						
Light golf strokes						Part of the eye						
				Joint in the leg					Small barrel			
American vagrant		<i>My _____</i> , Frank Sinatra hit				Tempos						

Rearrange the shaded letters to spell the answer to this question:
There Are Worse Things I Could Do is a song from which musical film?

ANSWER

Celebrity Trivia

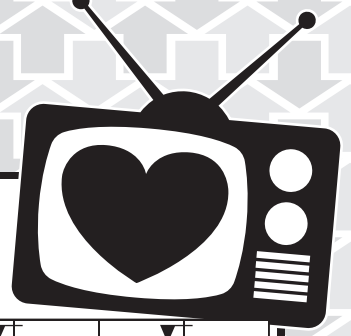
— Rabbit, JC Harris character	More amiable	Rolled sticky biscuit (6,4)	— away, eroded	Pictured actor's first name	Belches out	Tropical pear-shaped fruit
		<i>Take On Me</i> singers (1-2)		— Merton, comedian		
<i>Billie</i> —, Michael Jackson hit	<i>Sister</i> —, Whoopi Goldberg film		British honorary award (inits)		Cleveland's US state	Watched closely
		Lamb's mother		Worked on a loom		
Irritable	— Aykroyd, actor		Walk with a swagger			
					Wedding-ring metal	— Reed, <i>Perfect Day</i> lyricist
Bearing, manner	Dodge, elude					
					Handle roughly	At a great distance
— Braun, Hitler's mistress						A great deal
					Absconded (3,3)	Small and slim
Catch	Hit, thump	Daft, gormless	Pictured actor's surname	— of the Guard, Beefeaters	Spellbound	
			— Guevara, insurgent		Greek god of war	
Served a winner against	Eggs, medically			Possess		— Monte, tinned fruit brand
			Energy, vigour		Supreme Norse god	
Cage for chickens	1970s <i>Living Thing</i> group (inits)			Degenerate or exhausted		
Plaything for a child			Japanese currency unit		Escape, run away	



Rearrange the shaded letters to spell the profession that our pictured star considered before becoming an actor.

ANSWER

Telly Addict



Rearrange the shaded letters from both grids to reveal the title of a 2021 TV drama starring our pictured actor. (4)

Faith singer (6,7)		Star Wars princess		Awful kid		Pictured actor's first name		Enormous		___ Walcott, footballer		Precious stones
Vermouth cocktail		Knock sharply		Muslim prayer leader		Mental picture		Flop, failure		___ Smith, British singer		___ for Victory, WWII campaign
								Gave medicine to				
Unstructured	Town and port on the Firth of Clyde		Greedy person		Japanese school of Buddhism		Uncooked		Will Smith boxing biopic			
									Additive in takeaways (inits)			
Old naval drink		Last letter of the Greek alphabet										
				___ Jersey, US state								



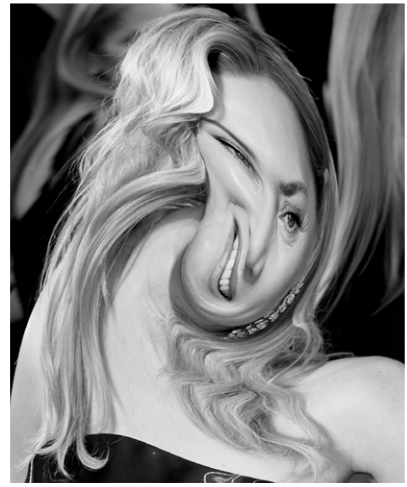
ANSWER

More gluttonous		Era of the Flintstones (5,3)		Short informal letters		Live and ___ Die, Bond film		Fire-breathing beasts				
Go mouldy				Long in the tooth								
Pictured actor's surname		Riverbank animals							En ___, all at once	Enraged	Sam ___, The Piano actor	Lazes
				Expected journey end (inits)				Tiny car				
___ Kunis, Black Swan actress		Early cloth measure				Stared fiercely						
				Umberto ___, Italian writer				Travel by ship				
Faithful, constant		Britain's ___ Talent, TV contest				Swiss chocolate company						
				Mayday call (inits)				Jellied ___, Cockney delicacy				

Who Is It?

Who is our mystery celebrity?
Solve the puzzle then rearrange the
shaded letters to find out. (4,7)

Highest large lake in the world	Vex, annoy	Fine strand (of hair)	— Weldon, author	Dried grass as fodder					
Phone system on the internet		Shaggy beast of burden	Protein-rich food item	Flat-nosed dog breed					
				Narrow beam				— Rouge, capital of Louisiana	
River on which Brecon stands	— Francisco, Californian city		Food, nosh						
			Lady —, Poker Face singer						
Work (flour) into dough		Toronto's country	Qatar's capital	Person of great wisdom		Flying choppers		Benign, kind	— the memory, remind
				One way or another					
Mo —, track and field athlete	Fixed yearly payment	— Sisters, 1970s Irish group				Hump, haul			— chicken, Jamaican dish
				— Howard, film director		— Peake, astronaut			Knotted threadwork
— Pavlova, Russian ballerina		Had the courage				Turned up			
			Clumsy, bungling	Pursue	Marine detection system				
Queen —, EastEnders pub		Innermost part	US form of 'Ltd' (abbr)		Burning fever	Nip with the beak			
			Brewer's vat	Come to a standstill				Have a flutter	Wood used in bow-making
Large open-topped carrier (4,3)						Auction website			
				Greatest, above all others					
Treacle	Mid-meal course					Irish —, hot meat dish			




ANSWER

Puzzler ARROWWORDS

🎵 Name That *tune* 🎵

Rearrange the letters in the shaded squares to spell a 2017 hit for our pictured singer. (7)

Cowboy hats	Barley bristle	Move to a smaller home	Frying utensil	Pictured singer (2,7)										
Cable for pulling a vehicle (3-4)														
— <i>My Party</i> , Lesley Gore hit	Offend against God	Roll (of notes)												
		Taverns												
Drink a little at a time		Handle clumsily	Female reindeer											
Real, genuine (4,4)	Know, in Scotland	— Ball, Radio 2 DJ	Sonny's 1960s partner	South African antelope						Biblical high priest	People of Denmark			
		Prophet	Hark, be mindful											
Cumbrian river	A few (3,2,3)	Shoemaker's tool	Also, as well	Becomes better						Dark volcanic bottle-glass	— Fitzgerald, jazz great			
											Showery weather			
Charitable gift	Female reproductive organ		Zoomed-in photograph (5-2)	Indian —, writing fluid							Power cut			
Quagmire	Cuts (the top) off									Open-air pools				
		River dam	North Yorkshire cathedral			— Sandler, <i>Click</i> actor		Old Testament paradise						
UK share index (inits)	Small forest				Boot with a blade for ice									
			Really unpleasant			Father's pet name								
Serve (tea or coffee)	Flat-pack retailer				Habit									
			Real bargain			Blokes								



Pyramid

			___ boom, loud noise		Chooses by ballot		Combine with a spoon		
		Aplenty, in great quantity						Pay court to	
	High winds		Wrinkled		Asterisks		Weave of hair		Pretty ___, 1990 film
	___ hoop, child's toy					Colditz inmate (inits)			Leaf of a book
Japanese sofa bed		Shopper's memory aid				Circle of rope			Stick for catching fish to eat
				Alternatively named (inits)			Stain, blight		
___ beans, popular food		___ Window, Hitchcock thriller				Last stage of insect life			
				Common dog command			Mr Flanders in <i>The Simpsons</i>		

Clueless

Who needs all the clues anyway? Work out what the five clueless answers should be.

?		Huge, enormous		Capital city of Chile		Measure of land area		Joined at the ___, inseparable		Sent ___, dismissed		Prevent loss of heat
						?						
?		___ out, make economies		Salesman				Of that ___, from the same family		Pesto herb		Marquees
				Remain		___ up, repressed	Too		Yet, however			
Blades for snow travel					Light-coloured beer (4,3)							
Chair or stool					Large deer				___ Antonio, Alamo city			
?		?						Brad ___, US film star				
					On your ___, alone				___ Dawson, comedy great			

Double Trouble

Here, you have two sets of clues, and you must decide which answer fits in which Arrowword grid, using the two given answers to start you off.

- 1 Nurses' workplace • Open to debate
- 2 Mardi ___, festival • Twelve midday
- 3 Warmly embrace • Suitable
- 4 Language of Bangkok • ___ up, explode
- 5 Dr ___, writer of children's rhymes
• Schemes
- 6 Large antelope • Make a request
- 7 Funeral vase • Young goat
- 8 Apartment • Attic
- 9 Adolescent • Confidences
- 10 Quickly • Auction items
- 11 Aged • *Top* ___, Tom Cruise film
- 12 Join as one • Big
- 13 Falsehoods • Is in debt to
- 14 Sharp-tasting • Ride a wave
- 15 Skip, leave out • Vietnam's continent
- 16 ___ Daly, TV presenter
• Volcano on Sicily
- 17 German for 'Mrs'
• Washable floor covering
- 18 Begin • Fourteen pounds
- 19 'Welcome' rug • View, look at
- 20 One who will inherit
• Meat from a cow
- 21 Period of rule • Measures of alcohol
- 22 Small horse-like animal
• Light afternoon meal

1		2		3	4	5
6		7		8		9
			10			
11	12		13			
			14		15	16
17		18	S	T	A	R
				19		
20		21				
				22		

1		2		3	4	5
6		7		8		9
			10			
11	12		13			
			14		15	16
17		18	S	T	O	N
				19		
20		21				
				22		

Co-Stars

Rearrange the letters in the shaded squares to spell a 2021 mini-series that features both of our pictured stars. (3,1,3)



Arranging in order of importance	▼	Encroaches	▼	Irish county	▼	___ Hawes, pictured actress	▼			
Battering ____, device to force entry	▶			<i>Would I ___ To You?</i> , TV show	▶					
Mint with the hole		Penultimate Greek letter	▶			Fencing phrase (2,5)				
	▶			Hair-styling substance	▶					
US ten-cent coin		Glistened	▶							
	▶			Dined	▶	Room for working out			▼	Perry ____, old TV lawyer
										Artificial colour
Strong, healthy		Brand-name salt	▶							Crossword diagram
	▶			Female peacocks		Competent				Snake with maths skills?
	▶									Pressed (grapes)
										Edge of a dress
Flexible thread of metal		One-on-one confrontation (4-2-4)	▶							Feel ill
	▶									
				Switzerland's capital city	▶					Extreme annoyance
										___ out, choose not to
___ on, encourages		Score of zero	▶			Shaun ____, pictured actor				Iconic chocolate drink
	▶									
				Whirlpool	▶					Posh gravy
										Heavy metric weight
				Turf		___ Lovato, US singer				Joan ____, American rock legend
	▶									
										Take legal action
										Weird, strange
										Woeful
				Periods of tuition	▶					
				Second-largest living bird	▶					Genetic material (inits)
				Surrendered	▶					



ANSWER

Solutions

Two of a Kind

S I H L
 R E A D Y M E A L
 N A S T
 Z E B R A B O A
 G I E D R O Y C M
 A L S O R A T O V A
 A L G A R V E E R R E D
 E Y E S I D E G O

H B P E A
 E A G E R P E R K I N S
 I N M I N O R E T
 I S S U E W A N U S E
 N O O N A
 K E A N U W A R
 R U N W E L L
 W A R M S D A Y

Name that Film

P A H M T
 D A M P A M I A B L E S
 S E A T S W E E P S
 W H O H O S E R E E L
 M B A A P G R E Y
 V I V A W O E
 N S H A L L
 L A K E Y E T

A M T A
 N E E D I N G
 N A D O
 D E P L O Y S B G E
 A R P I L L G E
 C O R E S E D I T I N G
 N V O C A L S L I P
 W O M E N K E T T L E S

ONE DAY

Trivia Quiz

P Y F L E H
 A L P A C A A B B E Y S
 E P I S B P
 K A Y B L A S E B E E
 O I D I M A N
 G R U D G E D I D L E D
 O I R E T A I L S
 F O R E S E E T L
 M O S T S T E A M E R
 C E A S E S O U
 A S K E W E X P L O I T
 T A B E T U R
 F U R R U P S H O T
 P U T T S R E T I N A
 H O B O K N E E K E G
 R W A Y S P E E D S

GREASE

Celebrity Trivia

F B E J S G
 B R E R A H A P A U L
 I A C T M B E A
 J E A N E W E W O V E
 N D A N S A S H A Y
 E D G Y I E
 L S G O L D
 M I E N O
 E V A M A U L
 T R A P F O
 D M Y R A P T
 A C E D C H E A R E S
 L O V A O W N T
 C O O P V I M O D I N
 U E L O E F F E T E
 T O Y Y E N F L E E

PRIEST

Telly Addict

L B S B T J
 G E O R G E M I C H A E L
 I A A G E S W
 M A R T I N I D O S E D
 A M M U A L I
 H A P H A Z A R D M S G
 Y O M E G A
 G R O G N E W

G S N
 R O T O L D
 E O T T E R S
 B E A N E T A M I N I
 D E L L G L A R E D
 M I L A E C O S A I L
 E G O T N E S T L E
 T R U E S O S E E L S

TIME

Who is It?

W F H
 T I T I C A C A
 R S S Y Y
 S K Y P E P
 A G R U B
 U S K G A G A
 A C Y T H J
 K N E A D S O M E H O W
 N O L A N L U G
 F A R A H G T I M J
 N D A R E D C A M E
 A N N A O S O N A R
 U I N C S P E C K
 V I C N H A L T R R
 T O T E B A G E B A Y
 S Y R U P S U P R E M E
 E N T R E E S T E W

KATE WINSLET

Name that Tune

S A D
 T O W R O P E
 E N W A D
 I T S I N N S
 S I P S H
 B O N A F I D E
 N W Z O E C
 E S K S E E R H E E D
 E A E L L A
 D O N A T I O N R A I N
 N W O M B C N N E
 E L O P S L I D O S
 B O G R I P O N U
 R W O O D S K A T E
 F T S E V I L E D A D
 W I K E A U S A G E
 P O U R S N I P M E N

PERFECT

Pyramid

V M
 S O N I C
 G T X W
 G A L E S P O W
 H L I S T L O O P
 F U T O N A K A M A R
 L R E A R I M A G O
 B A K E D S I T N E D

Clueless

C S A H O I
 M O S A I C I N F A N T
 L N R E P F S
 P O E T E I B U T
 S K I S P A L E A L E
 S E A T E L K S A N
 A G A I N S P I T T
 A L L O Y T O D L E S

Double Trouble

N A P G H S
 H O S P I T A L A R G U A B L E
 O T H O A G L U
 G N U F A S T A S K L O T S
 R L I E S I O W E S
 G U N A C C O L D F E E
 N S T A R T A S T O N E
 L I N O S E E F R A U M A T
 T U N I T S G R E I G N
 H E I R A S S B E E F T E A

Co-Stars

P I S K
 R A M L I E
 I P S I E
 P O L O G E L
 R S H O N E
 D I M E G Y M G
 T S A X A A D D E R
 F I T T R S Y I
 S H E A D T O H E A D
 W I R E B E R N E I
 N N I L O M I L O
 E G G S E D D Y R P
 O J E T T
 S O D U O
 L E S S O N S
 E M U D N A
 Y I E L D E D

IT'S A SIN